

# Alliance Dutch Technology

2025

---

**AI as a tool and driver in the market**

— Page 10

---

**The future of data-driven maintenance**

— Page 16

---

**Putting in the work towards the energy transition**

— Page 22

---



**People driven progress.**



# 12

Customized solutions  
for employees and  
clients



# 14

Leveraging each  
other's expertise



# 18

Preparing for  
the future



# 20

Smarter manufacturing  
through a new  
production line

# Table of contents

Foreword Jurgen and René	3
Facts & Figures	4
Technology around the world	6
Corporate Story	8
Sustainability	24
DTA Day 2025	26
Contact & Colophon	27

## Companies

FMI	10
Improvia	12
Viventris	14
ÆVO	16
Metrical	18
Rommtech	20
21 Groep	22



# 24

Sustainability

— Foreword Jurgen Spies and René de Keijzer

# Column



About three years ago, we founded the Dutch Technology Alliance: an entrepreneurial group of highly skilled technicians capable of truly creating something. We learn from each other, collaborate where possible, and celebrate the successes we achieve.

Meanwhile, we are working hard on the growth of our companies. New opportunities arise continuously, and we are confronted with new challenges. This is when we put our entrepreneurial spirit into action. We are committed to making our organizations more sustainable in terms of people, environment, and society, exploring how AI can be applied in our processes, and innovating to realize a future-proof industry. With 25 companies in the high-tech industry, we feel responsible for creating real value for society, in a responsible and sustainable manner.

Everyone working within or alongside our organizations contributes to this goal. We build smarter products, more efficient processes, and sustainable solutions. This while always valuing the people behind the technology. After all, despite the increasing role of automation, we cannot thrive without the skilled professionals who install systems, operate machines, or develop technologies.

Whether you work in production, engineering, logistics, or management, your work matters. We are proud of what we have achieved together, but we also know there is still so much more we can do. We want to thank everyone for their effort, involvement, and ideas. At the same time, we encourage you to keep making a positive impact. You are the driving force of sustainable innovation and a future-proof industry. Together, we make the difference.

---

“Technology is simply fun.”

---

# Facts & Figures

1962

Establishment  
FMI

1998

Establishment  
Elektra 21

2002

Acquisition by  
management of FMI

2008

Acquisition FMI  
Instrumed

2007

Establishment 21 Groep  
& FMI Engineering

2006

Establishment ImProvia.  
Acquisition FMI  
Manufacturing

2009

Establishment  
ImProvia Poland  
& InduCon 21

2010

Establishment  
ÆVO

2012

Acquisition  
FMI Machining

2014

Establishment  
FMI Mechatronics

2018

Establishment FMI  
Engineering Aachen  
& Install 21

2017

Acquisition Irmato  
Establishment ExRobotics  
& ProTect 21

2016

Acquisition 21 Groep  
Establishment  
FMI Additive

2020

Joint Venture  
FMI ImProvia  
Group

2021

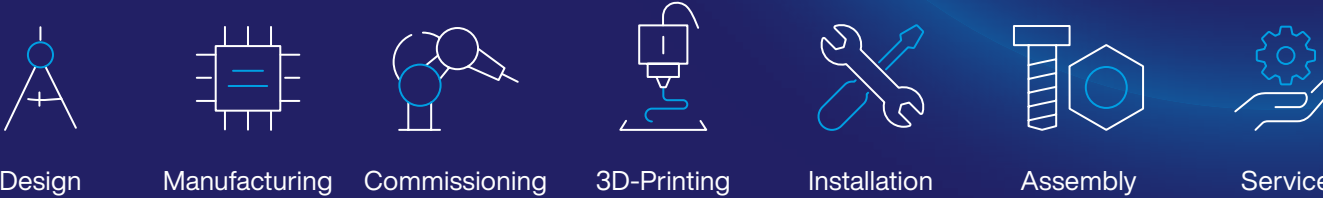
Acquisition  
Metrical Metaal  
Bewerking

2022

Acquisition  
Rommtech & IBZ &  
establishment of FMI High  
Tech Packaging



### Competences



### Branches



### Countries



### Companies



— Locations where our products end up

# Technology without borders



## Connected worldwide

Our products reach every corner of the world. From Europe to North America, and from Asia to the Middle East. This international presence demonstrates that the quality of our products has no boundaries.

● World map    ● Export countries

- |                 |                |
|-----------------|----------------|
| Belgium         | Norway         |
| Bulgaria        | Ukraine        |
| Canada          | Austria        |
| Denmark         | Poland         |
| Germany         | Spain          |
| Finland         | Taiwan         |
| France          | Czech Republic |
| Israel          | Turkey         |
| Italy           | United Kingdom |
| Liechtenstein   | United States  |
| Lithuania       | Sweden         |
| The Netherlands | Switzerland    |



# Building the future with smart technology

---

Technology has profoundly shaped our society in the past, and its impact will only increase in the coming years. The energy transition, the need for sustainability, a tight labor market, and rapid technological developments, all make technology more important than ever.

At Dutch Technology Alliance, we see tremendous opportunities in this. Smart technology enables us to develop solutions to tomorrow's challenges. Through the development, manufacturing, and sale of innovative and competitive products and services, we contribute to better technology and a better world.

We believe in the power of an integrated approach. By viewing challenges from multiple perspectives, we create solutions that exceed expectations. Within our alliance, like-minded, technically oriented companies combine their strengths. Each with its own expertise, yet sharing the same ambition. This diversity is what makes us strong.

With us, everything revolves around people. Our people are the head, heart, and hands of our success. Their craftsmanship, professionalism, flexibility, solution-oriented mindset, and customer focus make all the difference. Our employees are reliable and driven team players who bring out the best in themselves and in each other, every single day.

The collaboration between our employees, subsidiaries, and customers is our greatest strength. Together, we create new opportunities, new activities, and new jobs. With relentless ambition, we seize every opportunity to shape the future — a future in which smart technology leads the way.



“ A future where smart technology takes the lead. ”



## The core of Dutch Technology Alliance

# C I R C L E

### Collaboration

The collaboration between our employees, our entities and customers is our key success factor.

### Integrity

Our multidisciplinary nature gives us a holistic view of technology.

### Recognition

People are the driving force behind everything we do. That is why we let the technicians take center stage.

### Craftsmanship

It is our professionalism, expertise and solution-oriented thinking that distinguishes us in the market.

### Learning

We contribute to the improvement of technology and everyday life through continuous learning and development.

### Entrepreneurial

We are entrepreneurs at heart, seizing every opportunity to shape the future.

— Ensuring progress, empowering innovation

# FMI

What began in 1962 as a machining company in Bergen op Zoom has grown into a group of production and assembly companies with more than 250 employees. FMI delivers build-to-print precision solutions for leading companies in the semiconductor, analytical, and medical sectors. Seven specialized business units work together on the production of parts, modules, tooling, and packaging:

## FMI Machining

Produces large metal components for industries such as offshore and petrochemicals.

## FMI Precision

Produces highly accurate CNC-milled components for the semiconductor and analytical markets.



## FMI Manufacturing

Focuses on serial CNC machining and the production of large precision components for the semiconductor, analytical, and defense industries.

## FMI Additive

Delivers 3D-printed parts for applications in medical and semiconductor sectors, among others.

## FMI Instrumented

Manufactures surgical instruments and medical implants.

## FMI Mechatronics

Assembles modules, including in cleanrooms, and provides supply chain management and repair services.

## FMI High Tech Packaging

Produces high-quality reusable packaging for, for example, the transport of high-tech equipment.





### Return for Re-Use, the increasing importance of sustainability at FMI

Sustainability is becoming ever more important within FMI. Almost every business unit is focusing on this new strategic pillar. Legislation and regulations are increasing, and clients have greater expectations on suppliers regarding sustainability. At the same time, FMI recognizes that raw materials are becoming scarcer, energy prices are rising, and the focus of sustainable employability has become more crucial than ever.

Together with the other companies within the Dutch Technology Alliance, FMI is taking concrete initiatives to accelerate the transition toward a more sustainable way of doing business. Several production sites are becoming more sustainable by increasing the use of renewable energy sources. In addition, FMI Mechatronics is actively developing circular strategies, which have already resulted in a new business case.

Customers can return their modules to FMI Mechatronics for inspection and possible repair, thereby significantly extending the product's lifespan. To make repairs easier and enable reuse within circular production cycles, products must be designed in a more modular way. FMI sees strong potential in this approach and notes a growing demand for such services. Existing designs are therefore being reviewed and optimized so they can endure multiple life cycles. In doing so, FMI contributes to the reduction of raw material usage and to reducing the CO<sub>2</sub> footprint of the production process.

### AI as a tool and market driver

FMI views artificial intelligence as an indispensable engine for its next phase of growth. AI provides practical solutions to real-world challenges. For example, enabling organizations to achieve more with fewer people, thereby addressing the labor shortage caused by an aging workforce. More specifically, FMI has successfully optimized its purchasing department through automation and the smart application of AI. This resulted in a fivefold increase in turnover without expanding the team. So by combining process optimization, digitalization, and AI, FMI is able to generate higher output without hiring additional staff.

The rapid developments and applications of AI are driving strong growth in the semiconductor market. Clients are expanding their production capacity, and FMI aims to be a serious partner in that journey. This ambition requires organizational flexibility. The world is changing fast and AI helps FMI to adapt more easily, plan more intelligently, and retain knowledge more effectively. In doing so, FMI positions itself for a strong and sustainable future.

---

“ Ensuring Progress, Empowering Innovation. ”

---

# Improvia

Improvia was founded on September 1, 2006, in response to the growing market demand for immediately deployable technical specialists to tackle complex engineering challenges. Our founders, with their deep knowledge and experience, recognized the opportunity to bridge the gap between companies' technical challenges and the expertise required to solve them.

5 locations

100+ employees

50+ customers

From the very start, we have focused on providing highly qualified engineers who can adapt quickly and effectively, enabling our clients to execute their projects efficiently, even in the most demanding environments. This practical approach has allowed us to grow continuously while contributing to the success of our clients.

With years of experience, we continue to lead the way in delivering technical solutions that help companies boost productivity and successfully tackle their engineering challenges.

With a team of more than one hundred engineers and project managers and a strong national presence, we proactively offer a smart solution.

Improvia offers expertise in Mechanical, Electrical, and Software Engineering, as well as Project Management — from design to realization.

Together, these capabilities ensure smart and sustainable solutions, from concept to completion. Our specialists work either on-site or at the client's location, depending on the need, ensuring efficient processes, reliable systems, and successful projects – even under pressure.

## Our people in focus

We spoke with two of our professionals, Tom Couwenberg and Niels van den Boom, about their journey to Improvia and their experiences since joining the company.

For Niels, joining Improvia was a natural choice after deciding to leave his previous employer. "The organization I worked for was very chaotic," he says. "Things were arranged at the last minute — for example, being sent abroad without any clear planning. I wanted more structure and better control over my work."

---

Improvia offered exactly what Niels was looking for: stability, clear processes, and an environment where his skills as a software engineer could thrive. Niels holds a bachelor's degree in Mechatronics from Avans University of Applied Sciences and now has nearly four years of experience in the technical sector. "My studies fit perfectly with the work I do at Improvia," he explains, "especially in projects for clients in the machine-building industry."

Tom also discovered Improvia through his own research. "I was searching on Google Maps for technical companies in the region, and Improvia immediately stood out. The website caught my attention, so I decided to apply." Tom earned his bachelor's degree in Mechanical Engineering from Fontys University of Applied Sciences and has been working in the field since 2018. "I've always enjoyed the combination of mathematics and physics forces, moments, formulas and at Improvia, I get to apply that knowledge every day."

### Customised solutions for employees and clients

What truly sets Improvia apart? Its genuine commitment to thinking along with both employees and clients. "At Improvia, you're not just placed on a project at random," says Niels.

"They take the time to understand who you are, what your strengths are, and especially on which aspect you want to grow. You're matched with an assignment that really suits you."

### Technology with impact

Both Tom and Niels are now working on technical projects where they can make a visible difference. Improvia delivers custom engineering solutions for its clients, requiring precision, smart automation, and reliable execution.

According to both, it's the combination of professional development and a people-first approach that makes Improvia unique. "You have real contact with your colleagues, short communication lines with the office, and the freedom to develop yourself," says Niels. "And you feel that same spirit in how we work with clients, we're truly seen as an extension of their team."

### Ready for your next step in engineering?

Whether you're an engineer looking to boost your career or a client in search of a dedicated and skilled engineering partner — Improvia is here for you.



— Our smart contribution for your smart production

# Viventris

The complex production of products for critical markets comes with major challenges. Labor shortages, rising costs, and growing pressure to operate sustainably, are forcing many companies to rethink their production strategies. Organizations are therefore increasingly focusing on production automation as a way to strengthen their market position and remain competitive. Every day, Viventris develops smart solutions that deliver consistent quality, higher output, and optimal process control. For nearly 20 years, the company has done this successfully. Since early 2025, it has continued its activities under a new name Viventris.

Viventris is specialised in three core areas: inspection, assembly, and handling, where it frequently applies its Vision Engineering expertise. It serves manufacturers in the consumer products, healthcare, food, and high-tech sectors. Always working side by side with clients, from engineer to engineer, following a proven approach: Smart Insights, Smart Development, and Smart Maintenance. The result: a reliable solution that provides a renewed foundation for the client's production process.

## Leveraging each other's expertise within the Dutch Technology Alliance

Within the Dutch Technology Alliance, the various companies not only learn from one another but also actively collaborate. For example, FMI used to mount inserts manually into steel plates, a time-consuming and error-prone process. FMI approached Viventris to automate this process. A fully automated solution, however, would have resulted in an unnecessarily complex machine. For that reason, Viventris proposed a more efficient concept: working with pre-coated inserts. This approach makes the screw-fastening process less error-sensitive and more cost-efficient. A test setup confirmed that the concept works successfully. The effectiveness of the solution lies in its inherent process control: controlled screwdriving based on torque and distance. The robot's vision system determines the exact position of the holes. Although the plates are pre-oriented, this additional check ensures maximum quality assurance. "This project is a textbook example of how Viventris thinks along with clients, from process to end product," says Floris Goet, Sales Engineer at Viventris. "It's also great to see how companies within the Dutch Technology Alliance strengthen each other through collaborations like this."





“It’s the variety that makes it interesting.”

### Employee spotlight: Wessel

Wessel, Vision & Metrology Engineer at Viventris, works every day on innovative automation solutions for the company’s clients. His focus lies on researching and developing camera-based systems that automate parts of the production process. “That might sound broad oriented, and it definitely is,” says Wessel. “It’s exactly the variety that makes my work at Viventris so enjoyable and interesting.”

In one specific project, Wessel programs a camera system that recognizes products and communicates precise pick positions to a robot. In another, he develops an automated visual inspection system that uses deep learning to detect cosmetic defects. Across nearly all his projects, Wessel applies his vision engineering expertise to accurately inspect products and detect defects within the client’s production process. “No two days are the same, and the variety of technical challenges keeps the work exciting and full of surprises.”



Viventris stays at the forefront of new technologies and draws inspiration from them to tackle emerging challenges. Looking ahead, Wessel hopes to continue innovating with the Viventris team: “I’d love to develop a truly distinctive idea — something innovative — and turn it into one of our standard solutions. That would be amazing.”

# ÆVO

---

ÆVO specializes in sustainable traffic management systems for movable bridges, locks, and tunnels. Since 2010, the company has designed, built, managed, inspected, and maintained the technology behind these vital (waterway) structures. With a dedicated team of 45 skilled professionals, ÆVO works for (semi-)governmental organizations in and around the Randstad region, operating from its locations in Halsteren and Hoofddorp. By applying smart and efficient solutions, ÆVO is helping to build the infrastructure of tomorrow.

## Service and Maintenance in the three largest cities in the Netherlands

ÆVO has long been responsible for service, maintenance, and renovation of various bridges, locks, and tunnels in Amsterdam, The Hague, and Rotterdam. This includes the well-known Erasmus Bridge, IJ Tunnel, Trekvliet Bridge, and the Parksluizen [locks] in Rotterdam. These structures are intensively used and classified as critical infrastructure. Even with proper maintenance, technical failures can occur. That's why ÆVO's team operates 24/7 emergency services, ensuring technicians are on site within 60 minutes to deliver quick and effective solutions. In addition, ÆVO performs risk-based maintenance to minimize or prevent failures.

## Expertise in construction and renovation

Thanks to its specialized technical expertise, ÆVO understands better than anyone what is involved in the construction, renovation, or optimisation of movable bridges and locks. Its engineers are familiar with the challenges faced by public authorities and can provide comprehensive support or full project management. ÆVO's CMSE-certified engineers (Certified Machinery Safety Experts) ensure that all installations meet the latest safety standards and regulatory requirements. In recent years, ÆVO has proven its value as the main contractor for the construction of the Michiel de Ruyter Bridge in Urk. ÆVO also designed and replaced the control systems and automation of the Erasmus Bridge and the Rozenburg Lock.

---

“ Smart technology is going to transform the world of infrastructure. ”

---

— Corné van Dravik

---

“ Dr. Bridge minimises  
downtime and extends  
lifetime. ”

---

— Dr. Bridge

With Dr. Bridge, ÆVO takes a major step toward the future of smart and efficient infrastructure management. This innovative concept enables the remote monitoring of bridges, locks, and tunnels, allowing preventive maintenance to be carried out based on real-time data. Where maintenance was once reactive, addressing issues only after they occurred, Dr. Bridge introduces a proactive approach. By collecting data from PLC control systems and IoT sensors, ÆVO can detect irregularities at an early stage and proactively intervene before technical problems arise. The data are processed locally and securely transmitted to the cloud, where they are analyzed in the ÆVO Lab. Using smart algorithms and machine learning, patterns are recognized, enabling maintenance to be performed more efficiently and precisely.

The value of Dr. Bridge was proven during its use at the Michiel de Ruyter Bridge. The system detected a malfunction in a submersible pump before the water level became critical. Thanks to this early detection, technicians were able to intervene in time, preventing a serious breakdown.

By combining advanced data analysis with hands-on field expertise, Dr. Bridge minimizes downtime and extends the lifespan of infrastructure assets. ÆVO continues to develop this technology in partnership with ExRobotics, a specialist in industrial inspection robots and advanced data processing. Through this collaboration, ÆVO benefits from the latest innovations in machine learning and remote monitoring, making the bridges, locks, and tunnels of tomorrow not only smarter, but also more reliable.



— Seizing opportunities: smarter, faster and more sustainable production

# Metrical

Metrical specializes in the manufacture and supply of high-quality drill holders for diamond core drills. From its location in Halsteren, a dedicated team of 15 professionals serves around 60 clients both in the Netherlands and abroad, including several multinational companies. For more than 25 years, Metrical has operated in this niche market, where only a handful of suppliers exist across Europe.



Metrical maintains a stock of approximately 25 kilometers of tubing and produces over 100,000 drill holders each year. With its substantial inventory, Metrical is a reliable and fast supplier; a key differentiating factor in a market that largely operates on a demand-driven basis. Moreover, customers are increasingly choosing local manufacturers, leading to growing demand within Europe. To respond to this trend, Metrical is making significant investments in automation, allowing for more in-house production and further strengthening its position as an innovative player in the European market.

## Faster, smarter, and more sustainable production with a new laser cutting machine

Metrical has taken a major step in automation and efficiency with the acquisition of an advanced tube laser cutting machine. This state-of-the-art system replaces traditional sawing and deburring, making production processes faster, more precise, and less labor-intensive.

The new machine enables Metrical to mitigate labor shortages, modernize its operations, and strengthen its competitive position. Thanks to this investment, the company can now enter new markets and respond more effectively to customer demands. In addition, material waste is reduced, and product quality is enhanced contributing significantly to Metrical's sustainability ambitions.



## Preparing for the future with a new young leadership team

For several years now, Metrical has been part of the Dutch Technology Alliance. Today, a new generation of management has taken over daily operations and is working hard to modernize the company. Following the acquisition, the initial focus was on stabilizing the organization, reducing uncertainty and achieving financially steady years. Now that this phase has been successfully completed, Metrical is shifting its attention to further professionalization and growth.

One of the key changes introduced by the new leadership is the move toward a more open and engaged company culture, where employees are encouraged to take initiative and actively contribute ideas for improvement.

“We’re really trying to empower people, to involve them in changes and give them space. It makes the work more enjoyable, and it simply works better,” says Nick de Keijzer, Managing Director of Metrical.

This renewed culture creates a more positive work environment, at the same time leading to greater operational efficiency. In addition to cultural transformation, Metrical continues to invest heavily in digitalization and process optimization, ensuring the company remains a reliable partner for its customers well into the future.

---

“ We’re really trying to empower our people ”

---

— Nick de Keijzer

---

— Innovation with a personal touch

# Rommtech

---

In Halsteren, Brabant, a close-knit team of 35 skilled professionals, works every day on the assembly of high-quality electronic components. Rommtech, a proud family-owned business, has built a strong reputation over the years across a wide range of sectors from machine building to security systems. At Rommtech, production is just the beginning. The company also contributes ideas and technical expertise to help shape the design and development of final products.

Since 2022, Rommtech has been part of the Dutch Technology Alliance. A logical step, says owner Erik Rommens. “What I’ve noticed is that clients appreciate that we’ve remained small-scale and approachable, yet we now have the knowledge and expertise of a larger group behind us.”

## Smarter production through a new assembly line

Rommtech continues to invest in the future. A clear example is the recent expansion of its production line, adding state-of-the-art machinery that improves efficiency, reliability, and precision while reducing the risk of errors.

One of the highlights is the selective soldering machine, which allows individual components to be soldered with extreme precision. Unlike traditional methods where the entire circuit board is dipped into molten solder, only the required components are now soldered. This approach is not only safer for delicate parts, but also more efficient and energy-saving.

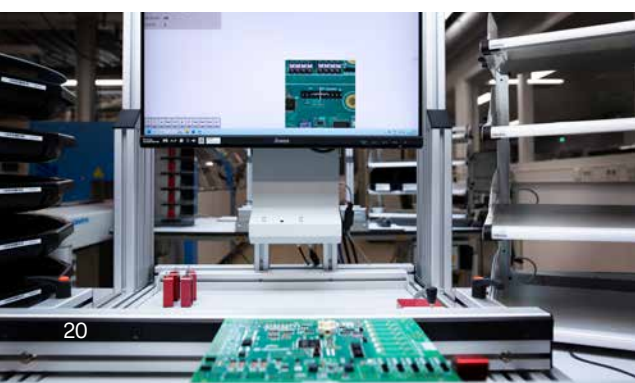
With the recent addition of the enhanced assembly line, including an innovative setup for manual assembly and selective soldering, Rommtech has once again taken a major step forward. “We’re one of the first companies in our field to have such a line,” Erik says proudly. “Sometimes I feel like pulling up a chair next to our production line, just to sit and watch it work all day. It’s fascinating to see how fast and precise it operates.”

This investment results in shorter lead times and highly reliable production, perfectly aligned with Rommtech’s growth ambitions.

## More than assembly, engineering and design as growth accelerators

Rommtech’s role has evolved far beyond that of a traditional assembler. Increasingly, the company is involved early in the design phase, collaborating directly with clients their engineering teams. This early engagement enables comprehensive design checks, ensuring that every product is technically sound and can be produced smarter and more efficiently.

A recent example: an electronic product that was previously assembled manually was redesigned by Rommtech’s engineering team and can now be produced fully automatically. The outcome: Lower costs, higher capacity, and shorter delivery times.



---

“ Our involvement in the design phase allows us to optimize products with our clients. ”

---

— Erik Rommens



---

— The power of integration

# 21 Groep

---

21 Groep is a leading total technical installation company operating in Southwest Netherlands and Flanders. Since its founded in 1998, the organization has grown into a group of five specialized companies, active in residential and commercial construction, industry, and security. With five locations across Zeeland and Brabant, 21 Groep provides comprehensive technical installation services from consultancy and design to installation, maintenance, and management.

According to Danny van de Velde, Director of Residential & Commercial Construction Zeeland, the company's strength lies in its integrated approach: "Clients can rely on 21 Groep from foundation to completion. Our 200 professionals work every day to deliver reliable, high-quality installations that remain safe and efficient for years to come. We want to leave every project with pride, knowing our client's systems are in performing optimally."

More organizations face challenges such as grid congestion and the energy transition. With a strong focus on quality, safety, and sustainability, 21 Groep is the service-oriented and a solution-driven partner for tackling these challenges.

---

“ Our strength is our integrated approach. ”

---





### Putting in the work towards the energy transition

The energy transition calls for technological innovation, strategic insight, and future-proof solutions. Organizations are facing challenges such as grid congestion, rising energy costs, and stricter regulations while still needing to maintain a reliable energy supply and keep operations running smoothly. In this challenging landscape, 21 Groep plays both an advisory and executive role, providing integrated, sustainable, and efficient solutions.

At the new site of parent company FMI, 21 Groep played a crucial role in adapting and expanding the energy infrastructure. Due to grid congestion, a local energy solution had to be developed, to ensure sufficient power for the production hall. The result: the installation of 650 solar panels, combined with a 400 kWh battery system. This setup keeps energy demand below the contracted capacity, reducing pressure on the power grid, lowering CO<sub>2</sub> emissions, and enabling continued production expansion at the Conradweg facility in Bergen op Zoom. A clear example of how 21 Groep applies its expertise to advance the challenging energy transition.

### Installation responsibility: safety for a future-proof industry

A future-proof industrial sector requires safe, reliable, and well-managed electrical installations. The installation responsibility (IV) for these systems is legally mandated and demands deep technical expertise. “Not every industrial company has that expertise in-house,” says Erno Mulders, Operations Manager Industry at 21 Groep. InduCon 21, part of 21 Groep, takes this responsibility as a delegated IV partner.

Combining consultancy and execution, InduCon 21 manages the entire process; from inspections and maintenance to the creation and enforcement of safety procedures. This is done using a three-phase approach and supported by the LogBoek 21 platform, where all relevant information is gathered and instantly accessible.

As with its other projects, 21 Groep combines technical expertise with strategic insight, helping industrial clients comply with legislation and maintain a safe, future-ready work environment. The result: installation safety as a foundation for a sustainable and resilient industry.

— Technology in service of nature and society

# Sustainability

Within the Dutch Technology Alliance, sustainability is defined broadly, extending far beyond environmental issues alone. In collaboration with its various member companies, the Alliance has developed a shared vision on sustainability.

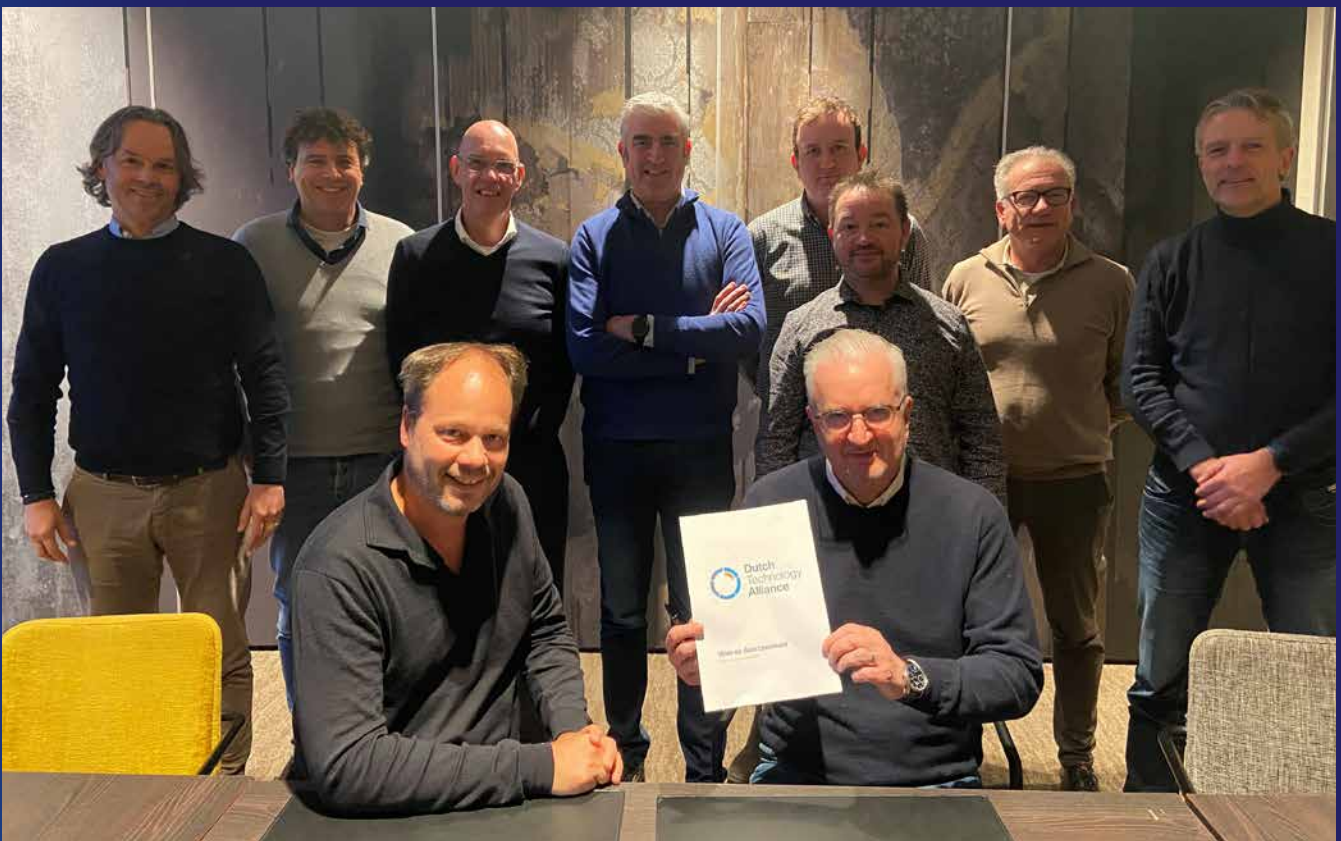
## Our shared vision on sustainability

“Dutch Technology Alliance recognizes the urgency of sustainable entrepreneurship. As a cooperative of technology companies, we have the capability through smart technology to contribute to reducing the impact on the climate, strengthening our impact on human capital, and taking our responsibility across the entire value chain.

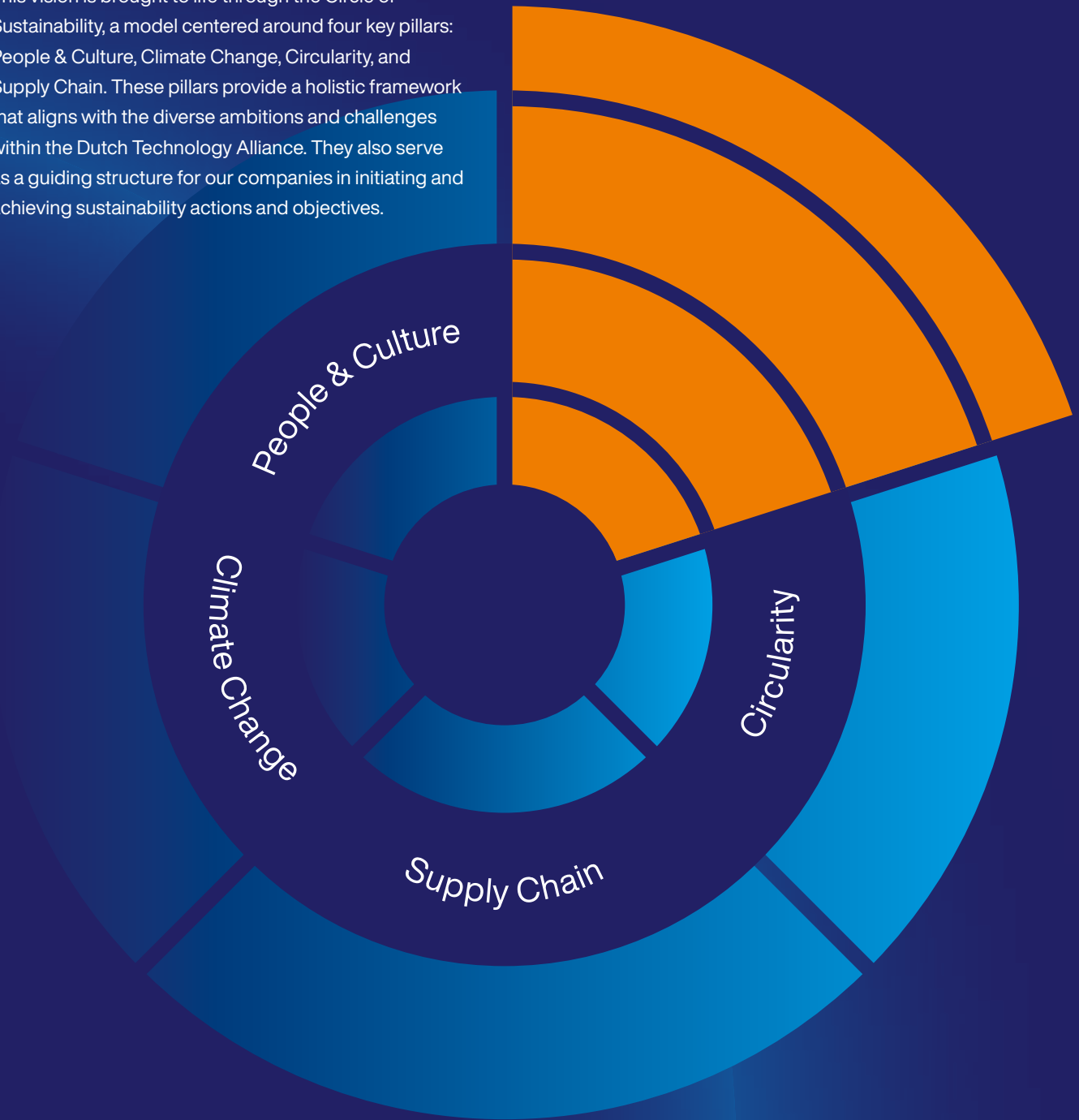
We aim to reduce our total ecological footprint, ensure future-proof employees, and pursue circularity in close

collaboration with our stakeholders. To achieve this, we learn from one another within the cooperative, work together where possible, and support each other by sharing experiences and results.

We strive for a future where technological innovation goes hand in hand with sustainable development, and we are convinced that we can build a future where technology serves both nature and society.”



This vision is brought to life through the Circle of Sustainability, a model centered around four key pillars: People & Culture, Climate Change, Circularity, and Supply Chain. These pillars provide a holistic framework that aligns with the diverse ambitions and challenges within the Dutch Technology Alliance. They also serve as a guiding structure for our companies in initiating and achieving sustainability actions and objectives.



### Collaboration, knowledge sharing and taking action

Together, our companies are identifying the specific actions needed within each organization, to live up to this vision and achieve collective sustainability objectives.

Each company is also conducting a baseline measurement to gain insight into its impact on people, planet and society. For this, the new Voluntary Sustainability Reporting Standard for Non-listed SMEs (VSME) is being applied.

— Dutch Technology Alliance

# DTA Day 2025

Within the Dutch Technology Alliance, we collaborate, learn from one another, and share experiences to help each other move forward. It's a continuous process throughout the year. We regularly come together during the various DTA Days to connect and grow as a collective.



This year, we gathered at the iconic Evoluon in Eindhoven. A location perfectly suited for a day full of inspiration and connection. We enjoyed an engaging lecture by Aart Bontekoning on generational diversity, took part in interactive sessions on sustainability and energy management, and even stepped literally out of our comfort zone during a workshop on digital wellness.

The DTA Days provide employees with the opportunity to truly connect with one another. They offer a valuable moment for reflection, collaboration, and personal growth. Helping us build a future-proof organization together.



# Contact



## FMI

Conradweg 22  
4612 PD Bergen op Zoom  
+31 164 21 36 00  
sales@fmi.nl



## Improvia

Effenseweg 1  
4838 BA Breda  
+31 88 550 43 00  
welkom@improvia.nl



## Viventris

Kevinlaan 5a  
9207 JB Drachten  
+31 85 760 88 75  
info@viventris.com



## ÆVO

Vang 20  
4661 TX Halsteren  
+31 88 550 43 40  
info@aevo.nl



## Metrical Metaal Bewerking

Vang 14  
4661 TX Halsteren  
+31 164 23 50 20  
info@metrical.nl



## Rommtech

Vang 20  
4661 TX Halsteren  
+31 164 63 26 00  
info@rommtech.com



## 21 Groep

Mr. F.J. Haarmanweg 38  
4538 AS Terneuzen  
+31 85 888 44 44  
info@21groep.nl

## Colophon

This magazine is a publication of Dutch Technology Alliance.

### Edition 2025

**(Final)editing** Cynthia Scholtz, Ileen Rommens, Alice van Assche, Bart Beune, Erik Rommens, Nick de Keijzer, Anne van Zwol (Studio Zwol) & Niels Kerstens (Advandet)

### Print run 1.100

**Design** ibizz — creative and digital agency

*No part of this publication may be reproduced, stored in a retrieval system, or transmitted in any form or by any means electronic, mechanical, photocopying, recording, or otherwise without prior written permission from the publisher.*



improvia

viventris



METRICAL

ROMMTECH



**Dutch**  
Technology  
**Alliance**

[dtall.nl](http://dtall.nl)